



Croeso i Ddosbarth Conwy (Year 2)

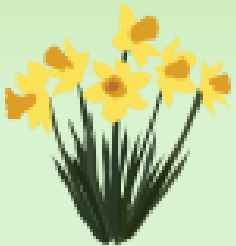


St Peter's "A creative school family that shines together through God's love & grace."



In Dosbarth Conwy (Yr2) we pride ourselves on working together & encouraging each other to try our best and take risks in our learning. We work hard to follow the school rules of 'Listen, Respect & Persevere' & our Christian Values.

We always aim high & strive to be...
Ambitious Capable Learners,
Healthy Confident Individuals,
Enterprising Creative Contributors &
Ethical Informed Citizens





Inside our Classroom

Our classroom is a safe, creative space where all pupils feel comfortable to express their own ideas & are allowed to take creative risks.



St Peter's "A creative school family that shines together through God's love & grace."



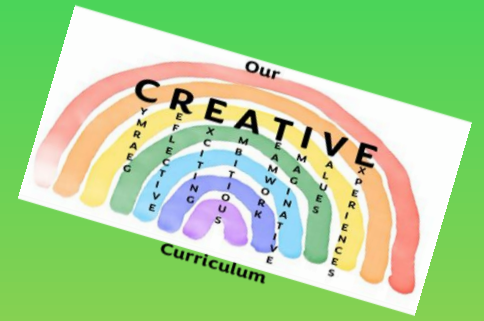


The learning environments inside & outside our classroom provide lots of opportunities for discussion, collaboration & independent working while nurturing a sense of awe & wonder.



St Peter's "A creative school family that shines together through God's love & grace."



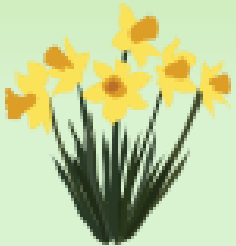


Our CREATIVE Curriculum in the
Autumn term (Bl. 2)

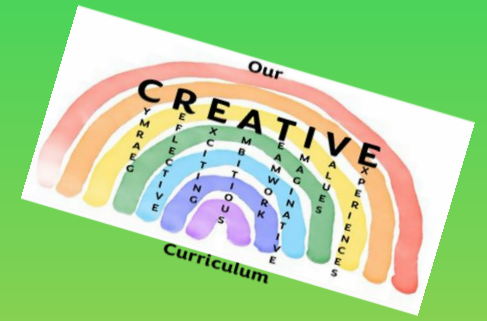
This term our topic is... **Changes.**

In Dosbarth Conwy we will be looking at the
'Changes' that have happened over time to our
clothing, schools and shops.

Our topic will run through all Areas of Learning with
lots of opportunities for pupil informed contributions.



St Peter's "A creative school family that shines together through God's love & grace."



Our **CREATIVE** Curriculum in the Autumn term (Bl. 2)

RVE

Collective &
Whole school worship.
Christian Values

Belonging – Where and what
we belong to and how it
makes us feel to belong.

Harvest

Hannukah
What is Hannukah and how is it
celebrated?
Christianity & Christmas

Health & Wellbeing

My Happy Mind
PE
Where I belong
Internet safety

Science and Technology

Habitats
Life Cycles of animals
Food chains

DT

Experimenting with
Sewing skills
Christmas creations

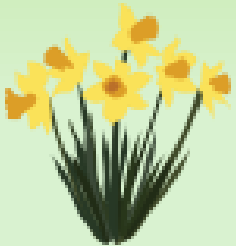
Humanities

Climate change
Importance of habitats
Welsh castles (Conwy)
Life in the past (clothes, schools,
Shops)
Understand our actions effect the
world around them.
Reduce/ reuse/ recycle

Reading List:

This term we will be reading a range of literature to
support our topic & our Areas of Learning.

Booklist to follow.





Our CREATIVE Curriculum in the Autumn term (Bl. 2)



Language, Literacy & Communication

Fiction writing - focusing on characters, characterisation & settings using the Talk for Writing approach.

Daily reading & spelling practise.

Using adjectives & exciting story starters in our writing.

Using connectives and similes

Re-drafting & editing our work.

Non-fiction writing – Explanations

Using simple punctuation correctly in our writing

Beginning to use ? and !

Cymraeg

Revision of:

Sut wyt ti?

Sut mae'r tywydd Heddiw?

Beth wyt t'in eisau?

Helpwr Heddiw

Fflic a Flac

Mathematics & Number

Daily times table practise

Place Value

Addition & Subtraction

Multiplication & Division

Fractions

Expressive Arts

Drawing using emotions

- HOME/ FEAR/ FAMILY.

Drama and role-play.

Music of the World

Seasonal Art

Outdoor Learning/ Forest Time

Loose parts collages

Investigating habitats

Animal art

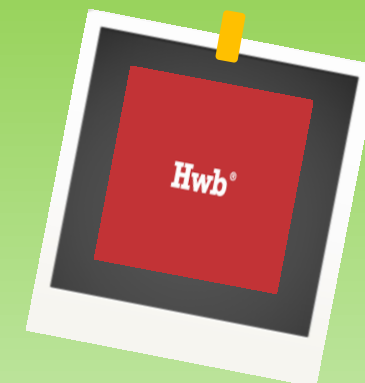


St Peter's "A creative school family that shines together through God's love & grace."



Home Learning Hub

Welcome to our Home Learning Hub. You can access lots of platforms to support your learning, including:



St Peter's "A creative school family that shines together through God's love & grace."