

**Our CREATIVE Curriculum in the
Spring Term (Bl. 6)**

This term our topic is... Discoveries.

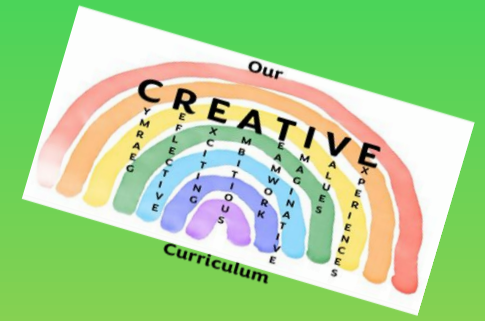
As part of our whole-school topic “Discoveries”, Year 6 will be finding out about ‘The Deep’. We will learn about our oceans and the creatures that live within these amazing habitats.

In science we will be finding out about Charles Darwin and his scientific theory of evolution and the impact of his discoveries.

In Dosbarth Beaumaris we will also be taking our investigations outside with weekly outdoor/ forest time sessions.

St Peter’s “A creative school family that shines together through God’s love & grace.”





Our **CREATIVE** Curriculum in the Spring Term (Bl. 6)

RVE

Christian Value: **SERVICE**

Christianity
Parables of Jesus

Hinduism

Health & Wellbeing

My Happy Mind

PE
Gymnastics

Cymraeg

Asking for and
giving information.
Expressing an opinion.
Using the past tense.

Humanities

History:

Charles Darwin – a Victorian Scientist

Geography:

The Oceans –
layers, currents and tides
Migration
Climate change & pollution

Expressive Arts

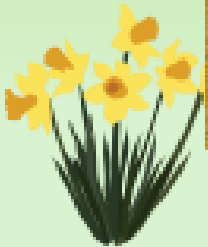
Inspired by work of Mandy
Barker, with focus on
marine plastic pollution.

Reading List:

The Lost Whale by Hannah Gold.

Non-Fiction:

Books about the Ocean. Fact files.



St Peter's "A creative school family that shines together through God's love & grace."



Our CREATIVE Curriculum in the Spring Term (Bl. 6)



Language, Literacy & Communication

Fiction writing – Using the ‘Talk for writing’ approach:

Inject action into a setting or character to create atmosphere,
use personification & similes,
fronted adverbials,
repetition to build tension and suspense.
SPAG activities

Daily reading & spelling practice.

Non-fiction writing – recount & Non-chronological reports



Science & Technology

Science & Technology
Evolution and Inheritance

D.T
STEM – Design and create a flood barrier.

Mathematics & Number

Adding, subtracting,
multiplying and dividing fractions.

Ratio and Proportion

Algebra

Decimals and Percentages

Measure- perimeter, area and volume

Cross-Curricular activities

Analysing data

Outdoor Learning/ Forest Time

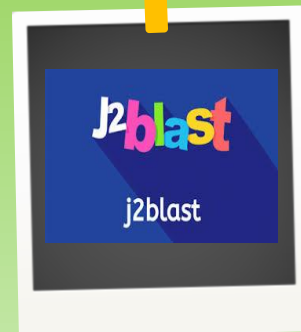
Beak Adaptation Challenge,
Camouflage Hunt, Fossil Detectives,
Habitat Adaptation Walk and Darwin’s
Finches





Home Learning Hub

Welcome to our Home Learning Hub. You can access lots of platforms to support your learning, including:



St Peter's "A creative school family that shines together through God's love & grace."